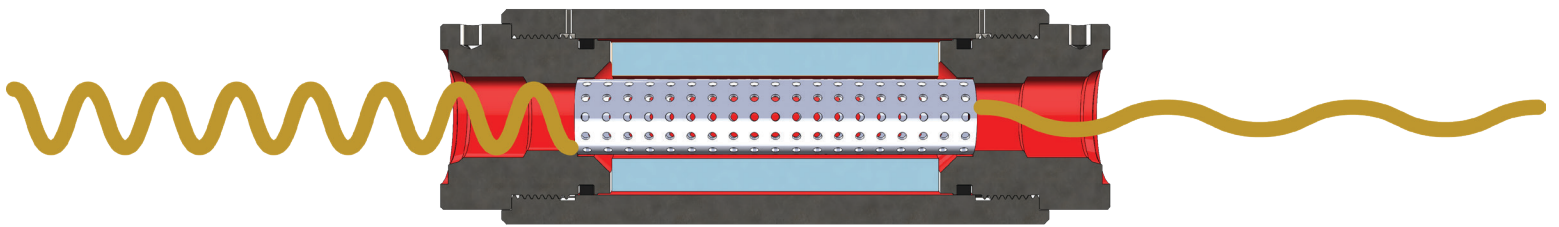


# WILKES PULSE ENERGIZED SLEEVE HYDRAULIC NOISE SUPPRESSOR

A WILKES AND MCLEAN COMPANY

## Our Newly Patented Maintenance Free Noise Suppressors

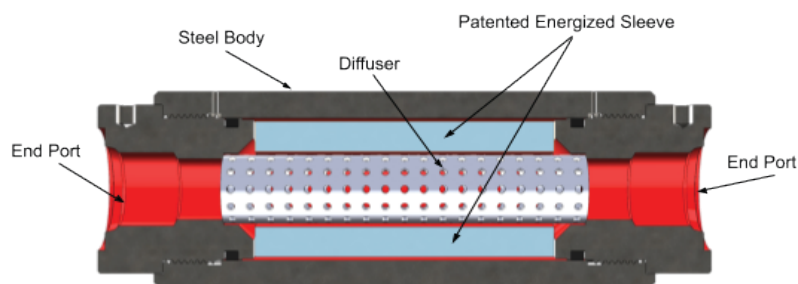


WILKES & MCLEAN  
600 ESTES AVE  
SCHAUMBURG, IL 60193  
877-534-6445  
WWW.WILKESANDMCLEAN.COM  
ISO 9001:2015 CERTIFIED



**“Quieter, Smoother, Safer”**

# ENERGIZED SLEEVE NOISE SUPPRESSOR



- Maintenance Free
- No Pre-Charge Required

---

- Reduces Noise
- Reduces Vibration
- Absorbs Hydraulic Shock
- Reduces Pulsations

---

- Easy, Inline Installation
- Multiple Configurations
- Negligible Pressure Drop

---

- Increases Longevity
- Improves Worker Comfort

<b>Standard</b>		
Maximum Pressure	Connection Type	Page Number
1000 PSI	NPT	2
	SAE	2
	BSPP	2
	SPLIT FLANGE	5
3000 PSI	NPT	3
	SAE	3
	BSPP	3
	SPLIT FLANGE	5
5000 PSI	SAE	4
	BSPP	4
	SPLIT FLANGE	5

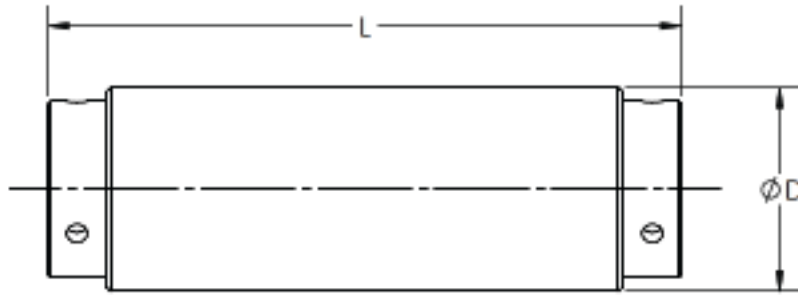
Wilkes Pulse's new, patented Energized Sleeve line of suppressors (pictured above) use a proprietary hydraulically stable engineered foam to effectively treat hydraulic noise. The Energized Sleeve locally reduces the effective stiffness in the hydraulic system similar to the bladder in traditional hydraulic suppressors or the expansion chamber of a hydraulic muffler.

The energized sleeve suppressors can work as drop-in replacements for the Wilkes & McLean bladder style suppressors. Available in the same size as our bladder suppressors, we can accommodate line sizes from 3/8 inch to 2 inches, handling your most demanding hydraulic needs.

<b>Stainless Steel</b>		
Maximum Pressure	Connection Type	Page Number
1000 PSI	NPT	6
	SAE	6
	BSPP	6
	SPLIT FLANGE	9
3000 PSI	NPT	7
	SAE	7
	BSPP	7
	SPLIT FLANGE	9
5000 PSI	SAE	8
	BSPP	8
	SPLIT FLANGE	9

The structural elements of our standard suppressors are made of carbon steel, and all external elements are black oxide coated. Non-standard coatings and stainless steel options available on request.

# 1000 PSI THREADED SUPPRESSORS



Model	Line Size	Maximum Flow Rate gpm (lpm)	Dimensions		Approximate Weight lbs (kg)
			D in (mm)	L in (mm)	

## NPT

WM-1056-.375NPT-ES	3/8 in	15.1	2.48	6.88	5.8
WM-1056-.5NPT-ES	1/2 in				
WM-1081-.75NPT-ES	3/4 in	32.1	2.60	8.11	6.8
WM-1081-1NPT-ES	1 in				
WM-1138-1NPT-ES	1 in				
WM-1138-1.25NPT-ES	1 1/4 in	91.9	3.85	8.89	15.4
WM-1138-1.5NPT-ES	1 1/2 in				
WM-11875-1.5NPT-ES	1 1/2 in	171.0	4.60	10.51	21.2
WM-11875-2NPT-ES	2 in				

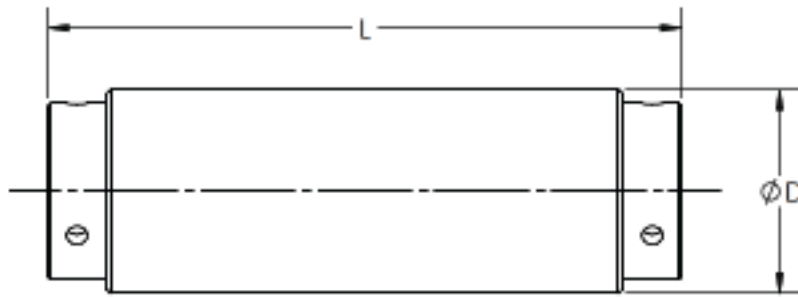
## SAE

Model	Line Size	Max Flow	Dimension D	Dimension L	Approx Weight
WM-1056-6SAE-ES	3/8 in				
WM-1056-8SAE-ES	1/2 in	15.1	2.48	6.88	5.8
WM-1056-10SAE-ES	5/8 in				
WM-1081-12SAE-ES	3/4 in				
WM-1081-16SAE-ES	1 in	32.1	2.60	8.11	6.8
WM-1081-20SAE-ES	1 1/4 in				
WM-1138-16SAE-ES	1 in				
WM-1138-20SAE-ES	1 1/4 in	91.9	3.85	8.89	15.4
WM-1138-24SAE-ES	1 1/2 in				
WM-11875-32SAE-ES	2 in	171.0	4.60	10.51	21.2

## BSPP

Model	Line Size	Max Flow	Dimension D	Dimension L	Approx Weight
WM-1056-.375BSP-ES	3/8 in				
WM-1056-.5BSP-ES	1/2 in	(57.2)	(63.0)	(174.8)	(2.6)
WM-1081-.75BSP-ES	3/4 in				
WM-1081-1BSP-ES	1 in	(121.5)	(66.0)	(206.0)	(3.1)
WM-1081-1.25BSP-ES	1 1/4 in				
WM-1138-1BSP-ES	1 in				
WM-1138-1.25BSP-ES	1 1/4 in	(347.9)	(97.7)	(225.7)	(7.0)
WM-1138-1.5BSP-ES	1 1/2 in				
WM-11875-1.5BSP-ES	1 1/2 in	(647.3)	(116.7)	(266.8)	(9.6)
WM-11875-2BSP-ES	2 in				

# 3000 PSI THREADED SUPPRESSORS



Model	Line Size	Maximum Flow Rate gpm (lpm)	Dimensions		Approximate Weight lbs (kg)
			D in (mm)	L in (mm)	

## NPT

WM-3056-.375NPT-ES	3/8 in	15.1	2.48	6.88	5.8
WM-3056-.5NPT-ES	1/2 in				
WM-3081-.75NPT-ES	3/4 in	32.1	2.60	8.11	6.8
WM-3081-1NPT-ES	1 in				
WM-3138-1NPT-ES	1 in				
WM-3138-1.25NPT-ES	1 1/4 in	91.9	3.85	8.89	17.8
WM-3138-1.5NPT-ES	1 1/2 in				
WM-31875-1.5NPT-ES	1 1/2 in	171.0	4.60	10.51	24.8
WM-31875-2NPT-ES	2 in				

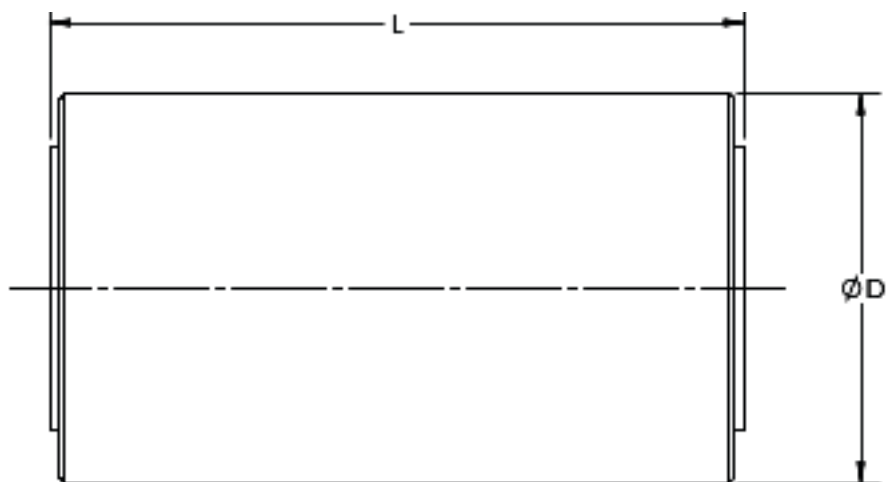
## SAE

Model	Line Size	Max Flow	Dimension D	Dimension L	Approx Weight
WM-3056-6SAE-ES	3/8 in				
WM-3056-8SAE-ES	1/2 in	15.1	2.48	6.88	5.8
WM-3056-10SAE-ES	5/8 in				
WM-3081-12SAE-ES	3/4 in				
WM-3081-16SAE-ES	1 in	32.1	2.60	8.11	6.8
WM-3081-20SAE-ES	1 1/4 in				
WM-3138-16SAE-ES	1 in				
WM-3138-20SAE-ES	1 1/4 in	91.9	3.98	8.89	17.8
WM-3138-24SAE-ES	1 1/2 in				
WM-31875-32SAE-ES	2 in	171.0	4.73	10.51	24.8

## BSPP

Model	Line Size	Max Flow	Dimension D	Dimension L	Approx Weight
WM-3056-.375BSPP-ES	3/8 in	(57.2)	(63.0)	(174.8)	(2.6)
WM-3056-.5BSPP-ES	1/2 in				
WM-3081-.75BSPP-ES	3/4 in				
WM-3081-1BSPP-ES	1 in	(121.5)	(66.0)	(206.0)	(3.1)
WM-3081-1.25BSPP-ES	1 1/4 in				
WM-3138-1BSPP-ES	1 in				
WM-3138-1.25BSPP-ES	1 1/4 in	(347.9)	(101.1)	(225.7)	(8.1)
WM-3138-1.5BSPP-ES	1 1/2 in				
WM-31875-1.5BSPP-ES	1 1/2 in	(647.3)	(120.1)	(266.8)	(11.2)
WM-31875-2BSPP-ES	2 in				

# 5000 PSI THREADED SUPPRESSORS



Model	Line Size	Maximum Flow Rate gpm (lpm)	Dimensions		Approximate Weight lbs (kg)
			D in (mm)	L in (mm)	

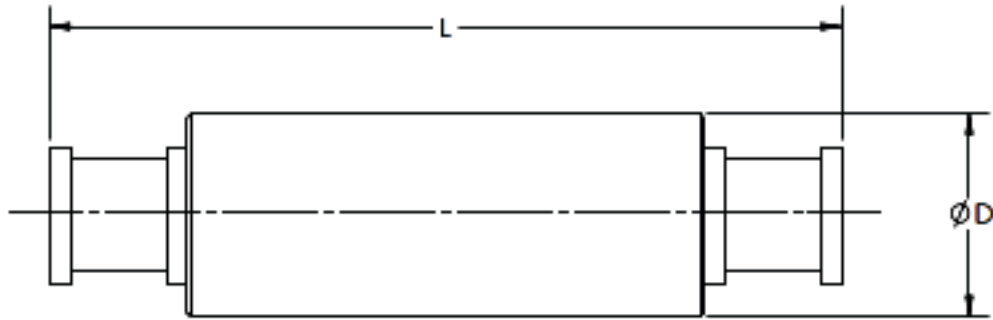
## SAE

WM-5056-6SAE-ES	3/8 in				
WM-5056-8SAE-ES	1/2 in	15.1	3.38	6.88	6.5
WM-5056-10SAE-ES	5/8 in				
WM-5081-12SAE-ES	3/4 in				
WM-5081-16SAE-ES	1 in	32.1	3.48	8.11	15
WM-5081-20SAE-ES	1 1/4				
WM-5138-16SAE-ES	1 in				
WM-5138-20SAE-ES	1 1/4 in	91.9	4.96	8.89	34.6
WM-5138-24SAE-ES	1 1/2 in				

## BSPP

Model	Line Size	Max Flow	Dimension D	Dimension L	Approx Weight
WM-5056-.375BSP-ES	3/8 in	(57.2)	(85.7)	(174.8)	(6.8)
WM-5056-.5BSP-ES	1/2 in				
WM-5081-.75BSP-ES	3/4 in				
WM-5081-1BSP-ES	1 in	(121.5)	(88.4)	(206.0)	(6.8)
WM-5081-1.25BSP-ES	1 1/4 in				
WM-5138-1BSP-ES	1 in				
WM-5138-1.25BSP-ES	1 1/4 in	(347.9)	(126.0)	(225.7)	(15.7)
WM-5138-1.5BSP-ES	1 1/2 in				

# SPLIT FLANGE SUPPRESSORS



Model	Line Size	Maximum Flow Rate gpm (lpm)	Dimensions		Approximate Weight lbs (kg)
			D in (mm)	L in (mm)	

## 1000 PSI SAE CODE 61 SPLIT FLANGE

WM-1081-12SF-ES	3/4 in				
WM-1081-16SF-ES	1 in	32.1	2.60	10.13	6.5
WM-1081-20SF-ES	1 1/4 in				
WM-1138-20SF-ES	1 1/4 in			13.13	
WM-1138-24SF-ES	1 1/2 in	91.9	3.85	13.13	25
WM-1138-32SF-ES	2 in			13.38	
WM-11875-32SF-ES	2 in	171.0	4.60	15.01	32
OTHER SIZES MAY BE AVAILABLE					

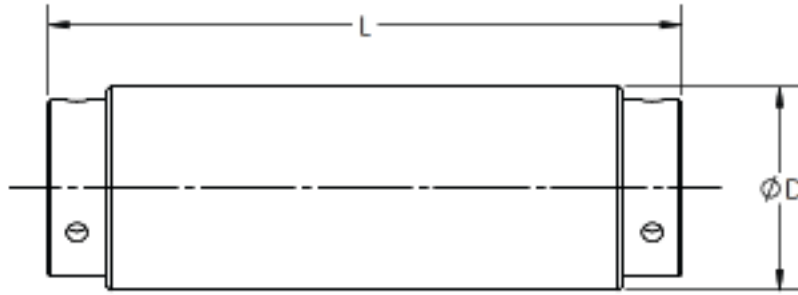
## 3000 PSI SAE CODE 61 SPLIT FLANGE

Model	Line Size	Max Flow	Dimension D	Dimension L	Approx Weight
WM-3081-12SF-ES	3/4 in				
WM-3081-16SF-ES	1 in	32.1	2.60	10.13	8
WM-3081-20SF-ES	1 1/4 in				
WM-3138-20SF-ES	1 1/4 in			13.13	
WM-3138-24SF-ES	1 1/2 in	91.9	3.98	13.13	25
WM-3138-32SF-ES	2 in			13.38	
WM-31875-32SF-ES	2 in	171.0	4.73	15.01	32
OTHER SIZES MAY BE AVAILABLE					

## 5000 PSI SAE CODE 62 SPLIT FLANGE

Model	Line Size	Max Flow	Dimension D	Dimension L	Approx Weight
WM-5081-12SFX-ES	3/4 in			10.13	
WM-5081-16SFX-ES	1 in	32.1	3.48	10.63	16
WM-5081-20SFX-ES	1 1/4 in			11.13	
WM-5138-20SFX-ES	1 1/4 in			13.13	
WM-5138-24SFX-ES	1 1/2 in	91.9	4.96	13.63	36
WM-5138-32SFX-ES	2 in			13.88	

# 1000 PSI STAINLESS STEEL THREADED SUPPRESSORS



303 and 316 may be available, note steel variety on order. Minimum orders may apply.

Model	Line Size	Maximum Flow Rate gpm (lpm)	Dimensions		Approximate Weight lbs (kg)
			D in (mm)	L in (mm)	

## NPT

WM-1056-.375NPT-ES-SS	3/8 in	15.1	2.48	6.88	5.8
WM-1056-.5NPT-ES-SS	1/2 in				
WM-1081-.75NPT-ES-SS	3/4 in	32.1	2.60	8.11	6.8
WM-1081-1NPT-ES-SS	1 in				
WM-1138-1NPT-ES-SS	1 in	91.9	3.85	8.89	15.4
WM-1138-1.25NPT-ES-SS	1 1/4 in				
WM-1138-1.5NPT-ES-SS	1 1/2 in				
WM-11875-1.5NPT-ES-SS	1 1/2 in	171.0	4.60	10.51	21.2
WM-11875-2NPT-ES-SS	2 in				

## SAE

Model	Line Size	Max Flow	Dimension D	Dimension L	Approx Weight
WM-1056-6SAE-ES-SS	3/8 in	15.1	2.48	6.88	5.8
WM-1056-8SAE-ES-SS	1/2 in				
WM-1056-10SAE-ES-SS	5/8 in	32.1	2.60	8.11	6.8
WM-1081-12SAE-ES-SS	3/4 in				
WM-1081-16SAE-ES-SS	1 in				
WM-1081-20SAE-ES-SS	1 1/4 in	91.9	3.85	8.89	15.4
WM-1138-16SAE-ES-SS	1 in				
WM-1138-20SAE-ES-SS	1 1/4 in				
WM-1138-24SAE-ES-SS	1 1/2 in	171.0	4.60	10.51	21.2
WM-11875-32SAE-ES-SS	2 in				

## BSP

Model	Line Size	Max Flow	Dimension D	Dimension L	Approx Weight
WM-1056-.375BSP-ES-SS	3/8 in	(57.2)	(63.0)	(174.8)	(2.6)
WM-1056-.5BSP-ES-SS	1/2 in				
WM-1081-.75BSP-ES-SS	3/4 in	(121.5)	(66.0)	(206.0)	(3.1)
WM-1081-1BSP-ES-SS	1 in				
WM-1081-1.25BSP-ES-SS	1 1/4 in	(347.9)	(97.7)	(225.7)	(7.0)
WM-1138-1BSP-ES-SS	1 in				
WM-1138-1.25BSP-ES-SS	1 1/4 in				
WM-1138-1.5BSP-ES-SS	1 1/2 in	(647.3)	(116.7)	(266.8)	(9.6)
WM-11875-1.5BSP-ES-SS	1 1/2 in				
WM-11875-2BSP-ES-SS	2 in				

# 3000 PSI STAINLESS STEEL THREADED SUPPRESSORS



303 and 316 may be available, note steel variety on order. Minimum orders may apply.

Model	Line Size	Maximum Flow Rate gpm (lpm)	Dimensions		Approximate Weight lbs (kg)
			D in (mm)	L in (mm)	

## NPT

WM-3056-.375NPT-ES-SS	3/8 in	15.1	2.48	6.88	5.8
WM-3056-.5NPT-ES-SS	1/2 in				
WM-3081-.75NPT-ES-SS	3/4 in	32.1	2.60	8.11	6.8
WM-3081-1NPT-ES-SS	1 in				
WM-3138-1NPT-ES-SS	1 in	91.9	3.85	8.89	17.8
WM-3138-1.25NPT-ES-SS	1 1/4 in				
WM-3138-1.5NPT-ES-SS	1 1/2 in				
WM-31875-1.5NPT-ES-SS	1 1/2 in	171.0	4.60	10.51	24.8
WM-31875-2NPT-ES-SS	2 in				

## SAE

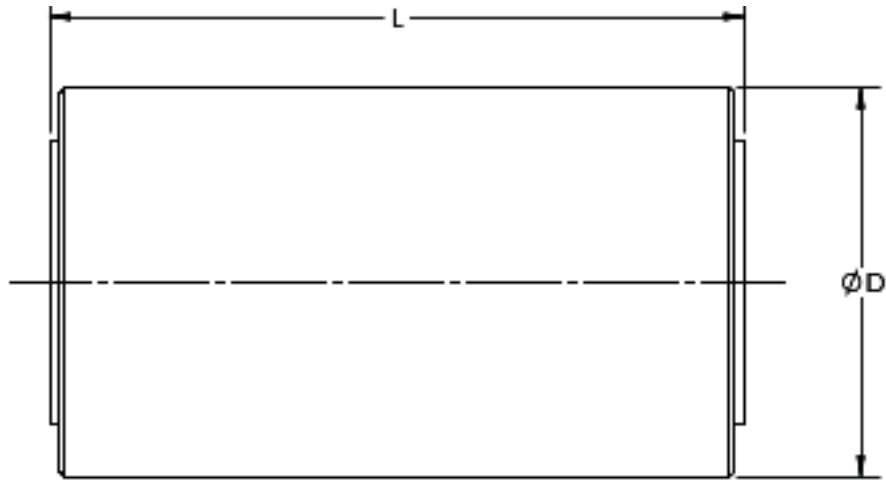
Model	Line Size	Max Flow	Dimension D	Dimension L	Approx Weight
WM-3056-6SAE-ES-SS	3/8 in	15.1	2.48	6.88	5.8
WM-3056-8SAE-ES-SS	1/2 in				
WM-3056-10SAE-ES-SS	5/8 in				
WM-3081-12SAE-ES-SS	3/4 in	32.1	2.60	8.11	6.8
WM-3081-16SAE-ES-SS	1 in				
WM-3081-20SAE-ES-SS	1 1/4 in				
WM-3138-16SAE-ES-SS	1 in	91.9	3.98	8.89	17.8
WM-3138-20SAE-ES-SS	1 1/4 in				
WM-3138-24SAE-ES-SS	1 1/2 in				
WM-31875-32SAE-ES-SS	2 in	171.0	4.73	10.51	24.8

## BSPP

Model	Line Size	Max Flow	Dimension D	Dimension L	Approx Weight
WM-3056-.375BSP-ES-SS	3/8 in	(57.2)	(63.0)	(174.8)	(2.6)
WM-3056-.5BSP-ES-SS	1/2 in	(121.5)	(66.0)	(206.0)	(3.1)
WM-3081-.75BSP-ES-SS	3/4 in				
WM-3081-1BSP-ES-SS	1 in				
WM-3081-1.25BSP-ES-SS	1 1/4 in	(347.9)	(101.1)	(225.7)	(8.1)
WM-3138-1BSP-ES-SS	1 in				
WM-3138-1.25BSP-ES-SS	1 1/4 in				
WM-3138-1.5BSP-ES-SS	1 1/2 in	(647.3)	(120.1)	(266.8)	(11.2)
WM-31875-1.5BSP-ES-SS	1 1/2 in				
WM-31875-2BSP-ES-SS	2 in				



# 5000 PSI STAINLESS STEEL THREADED SUPPRESSORS



303 and 316 may be available, note steel variety on order. Minimum orders may apply.

Model	Line Size	Maximum Flow Rate gpm (lpm)	Dimensions		Approximate Weight lbs (kg)
			D in (mm)	L in (mm)	

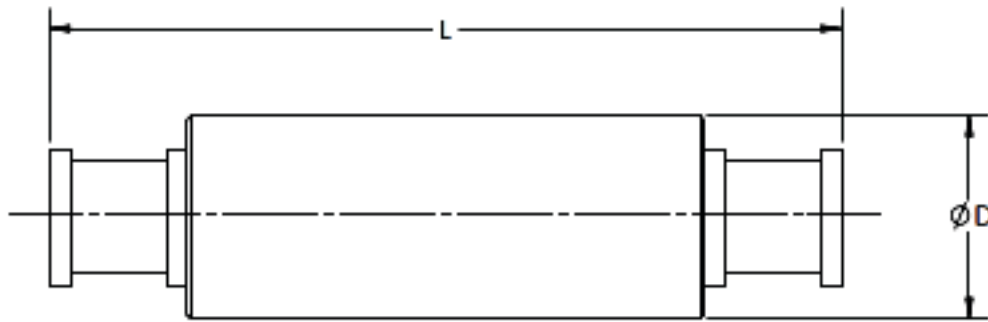
## SAE

WM-5056-6SAE-ES-SS	3/8 in	15.1	3.38	6.88	6.5
WM-5056-8SAE-ES-SS	1/2 in				
WM-5056-10SAE-ES-SS	5/8 in	32.1	3.48	8.11	15
WM-5081-12SAE-ES-SS	3/4 in				
WM-5081-16SAE-ES-SS	1 in				
WM-5081-20SAE-ES-SS	1 1/4	91.9	4.96	8.89	34.6
WM-5138-16SAE-ES-SS	1 in				
WM-5138-20SAE-ES-SS	1 1/4 in				
WM-5138-24SAE-ES-SS	1 1/2 in				

## BSPP

Model	Line Size	Max Flow	Dimension D	Dimension L	Approx Weight
WM-5056-.375BSP-ES-SS	3/8 in	(57.2)	(85.7)	(174.8)	(6.8)
WM-5056-.5BSP-ES-SS	1/2 in				
WM-5081-.75BSP-ES-SS	3/4 in	(121.5)	(88.4)	(206.0)	(6.8)
WM-5081-1BSP-ES-SS	1 in				
WM-5081-1.25BSP-ES-SS	1 1/4 in	(347.9)	(126.0)	(225.7)	(15.7)
WM-5138-1BSP-ES-SS	1 in				
WM-5138-1.25BSP-ES-SS	1 1/4 in				
WM-5138-1.5BSP-ES-SS	1 1/2 in				

# STAINLESS STEEL SPLIT FLANGE SUPPRESSORS



Model	Line Size	Maximum Flow Rate gpm (lpm)	Dimensions		Approximate Weight lbs (kg)
			D in (mm)	L in (mm)	

## 1000 PSI SAE CODE 61 SPLIT FLANGE

WM-1081-12SF-ES-SS	3/4 in				
WM-1081-16SF-ES-SS	1 in	32.1	2.60	10.13	6.5
WM-1081-20SF-ES-SS	1 1/4 in				
WM-1138-20SF-ES-SS	1 1/4 in			13.13	
WM-1138-24SF-ES-SS	1 1/2 in	91.9	3.85	13.13	25
WM-1138-32SF-ES-SS	2 in			13.38	

## 3000 PSI SAE CODE 61 SPLIT FLANGE

Model	Line Size	Max Flow	Dimension D	Dimension L	Approx Weight
WM-3081-12SF-ES-SS	3/4 in				
WM-3081-16SF-ES-SS	1 in	32.1	2.60	10.13	8
WM-3081-20SF-ES-SS	1 1/4 in				
WM-3138-20SF-ES-SS	1 1/4 in			13.13	
WM-3138-24SF-ES-SS	1 1/2 in	91.9	3.98	13.13	25
WM-3138-32SF-ES-SS	2 in			13.38	

## 5000 PSI SAE CODE 62 SPLIT FLANGE

Model	Line Size	Max Flow	Dimension D	Dimension L	Approx Weight
WM-5081-12SFX-ES-SS	3/4 in			10.13	
WM-5081-16SFX-ES-SS	1 in	32.1	3.48	10.63	16
WM-5081-20SFX-ES-SS	1 1/4 in			11.13	
WM-5138-20SFX-ES-SS	1 1/4 in			13.13	
WM-5138-24SFX-ES-SS	1 1/2 in	91.9	4.96	13.63	36
WM-5138-32SFX-ES-SS	2 in			13.88	

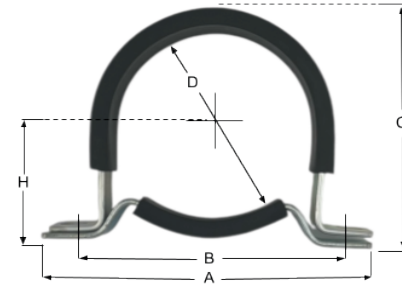
# CONTACT US TODAY

## 877-534-6445

### WWW.WILKESANDMCLEAN.COM

#### MOUNTING CLAMPS

For Suppressor Model Number	Clamp Model Number	Number of Clamps Required	Dimensions				
			D	A	B*	C	H
WM-3081	C-3081	1	2.62	5.00	3.94	3.32	1.66
WM-5056 WM-5081	C-5081	1	3.38	5.62	4.84	4.14	2.10
WM-1138 WM-3138	C-3138	1	4.00	6.24	5.46	4.76	2.41
WM-5138	C-5138	2	5.00	7.24	6.46	5.76	2.91
WM-11875 WM-31875	C-31875	2	4.75	6.99	6.21	5.51	2.78



\*Slot dimensions: 0.35X0.51 in  
Width on all clamps: 1.38 in

#### INDUSTRIES SERVED

- Marine
- Elevators
- Agriculture
- Industrial
- Construction
- Aerospace
- Mining
- Oil & Gas
- Manufacturing
- Power Plants
- Entertainment & Parks
- Mobile Equipment

#### ABOUT WILKES PULSE

For over 40 years, Wilkes Pulse has been the industry leader in inline hydraulic noise suppressors. Our latest innovation, the Energized Sleeve, is a maintenance-free suppressor that has set a new standard for noise reduction in the marine, mobile, and other industries.

At Wilkes Pulse, we prioritize delivering cutting-edge products that enhance efficiency and reliability while minimizing downtime and maintenance. Our Energized Sleeve provides customers a non-charged option for reducing pulsation, vibration and noise. We invite you to contact us to learn why OEMs and engineers worldwide choose Wilkes Pulse to keep their hydraulics quiet.



WILKES & MCLEAN  
600 ESTES AVE  
SCHAUMBURG, IL 60193  
877-534-6445  
WWW.WILKESANDMCLEAN.COM  
ISO 9001:2015 CERTIFIED



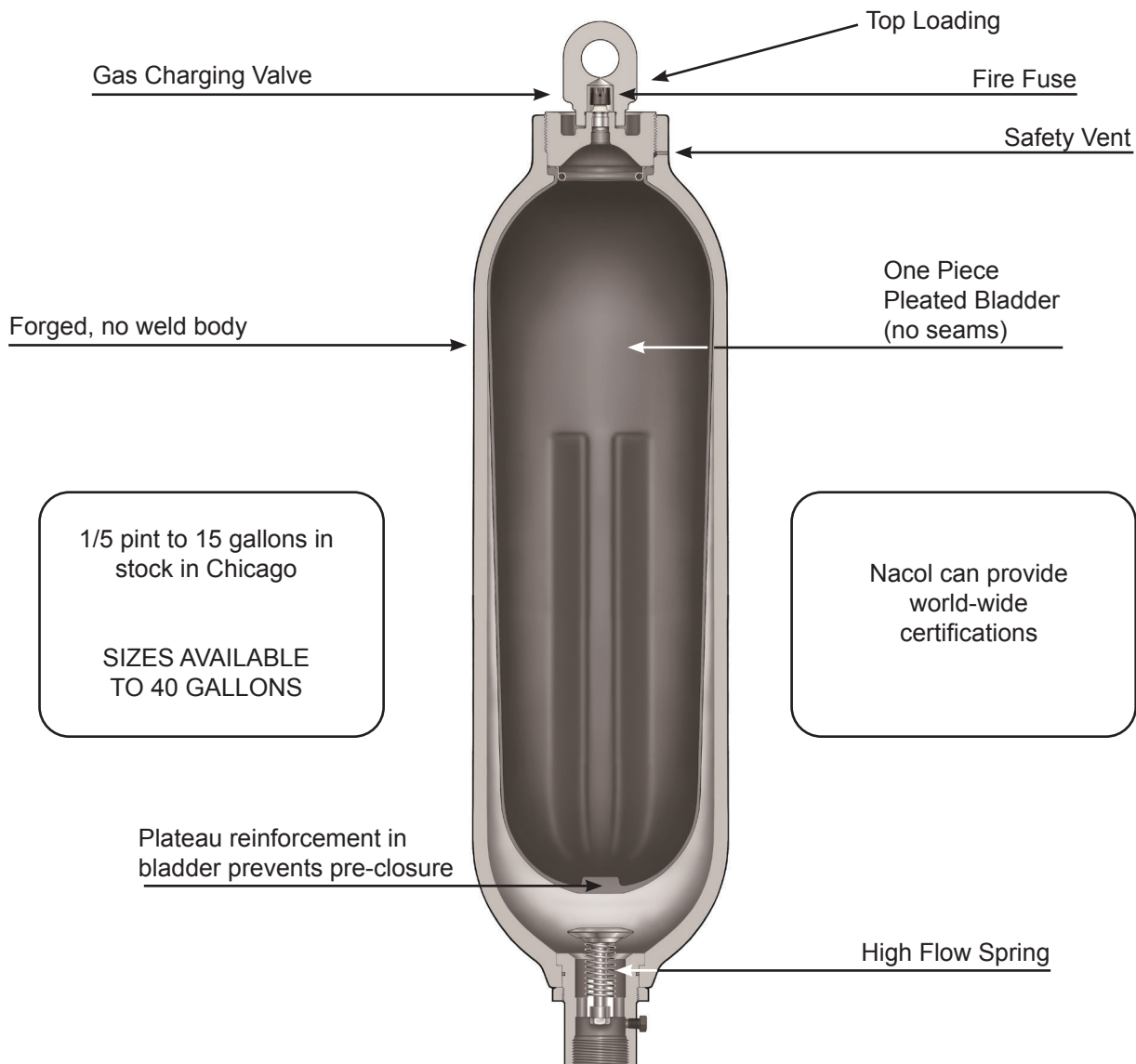
"Quieter, Smoother, Safer"

# WILKES ACCU NACOL ACCUMULATORS

Wilkes & McLean also represents and stocks the highest quality,  
Japanese, hydraulic accumulators.

# NACOL

**“DESIGNED AND MADE TO LAST LONGER”**



Wilkes Accu

600 Estes Avenue - Schaumburg - IL - 60193  
877-534-6445 • [www.wilkesandmclean.com](http://www.wilkesandmclean.com)

ISO 9001:2015 Certified  
A Wilkes & McLean Company